



Bower Street, Maidstone, ME16 8BB
Guide price £250,000 Freehold

 2  1  2  D

The Homes Group are delighted to present this two bedroom, two reception room, Victorian style terraced house which boasts off road parking to the rear and a first floor bathroom plus it is offered with no forward chain.

The property is conveniently located within half a mile of Maidstone West and Maidstone Barracks railway stations and within three quarters of a mile of Maidstone Town Centre.

Entrance Hall

Living Room

11' x 8'7 (3.35m x 2.62m)

Dining Room

11'9 x 10'9 (3.58m x 3.28m)

Kitchen

9'3 x 6'6 (2.82m x 1.98m)

Landing

Bedroom One

11'9 x 11' (3.58m x 3.35m)

Bedroom Two

11'8 x 11'1 (3.56m x 3.38m)

Bathroom

9'3 x 6'5 (2.82m x 1.96m)

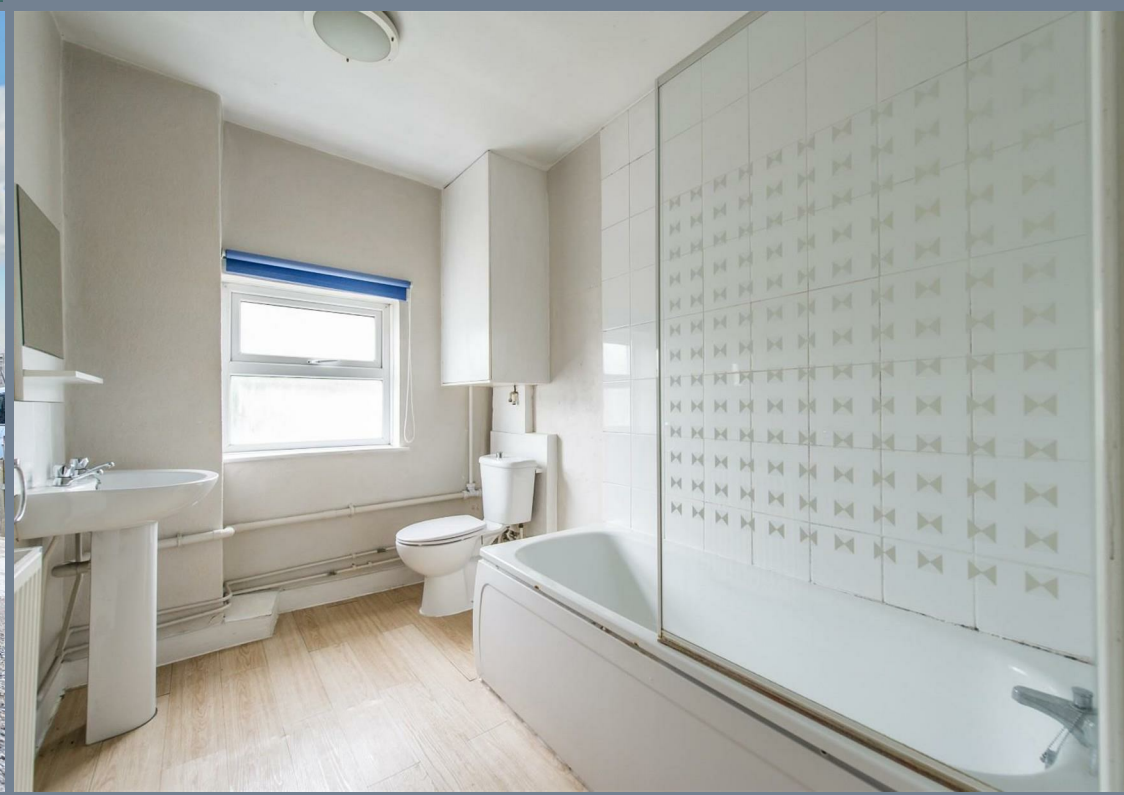
Rear Garden

40' plus parking area (12.19m plus parking area)

Parking to Rear

Tax Band D





Ground Floor

Approx. 33.9 sq. metres (364.9 sq. feet)



First Floor

Approx. 33.9 sq. metres (364.9 sq. feet)



Total area: approx. 67.8 sq. metres (729.7 sq. feet)



Energy Efficiency Rating		Current	Potential
Very energy efficient - lower running costs			
(92 plus) A			
(81-91) B			85
(69-80) C			
(55-68) D		60	
(39-54) E			
(21-38) F			
(1-20) G			
Not energy efficient - higher running costs			
England & Wales		EU Directive 2002/91/EC	

Viewing

Please contact our The Homes Group Office on 01322 875000 if you wish to arrange a viewing appointment for this property or require further information.

These particulars, whilst believed to be accurate are set out as a general outline only for guidance and do not constitute any part of an offer or contract. Intending purchasers should not rely on them as statements of representation of fact, but must satisfy themselves by inspection or otherwise as to their accuracy. No person in this firm's employment has the authority to make or give any representation or warranty in respect of the property.